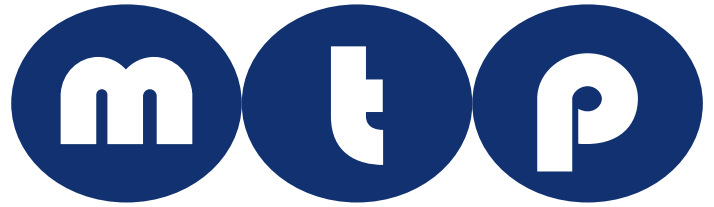


WB01

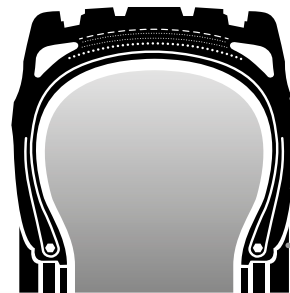
26.5R25** - 21.00R35**



Optimal durability

Enhanced working comfort

Excellent traction

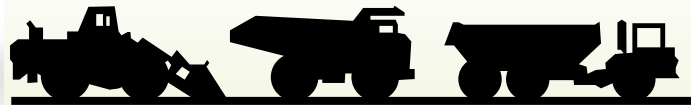


Special Tread Compound

Reinforced Inner Liner

Higher Turn Up Construction

Flat Base Bead Construction




All Steel Radial Construction - Multifunctional


Size	TRA Code	Load Symbol	Max. Speed (km/h)	Load Index	Standard Rim	Tread Depth (mm)	Overall Diameter (mm)	Section Width (mm)	Max. Load Capacity (kg)	Cold Inf. Pressure (kPa)	TT/TL
26.5R25	E3/L3	**	50	193B	22.00/3.0	37	1750	675	11500	525	TL
			10	202A2					15000	500	
21.00R35	E3	**	50	201B	15.00/3.0	44	2005	570	14500	700	TL




WB01

Size	TRA Code	Load Symbol	Max. Speed (km/h)	Load Index	Standard Rim	Tread Depth (mm)	Overall Diameter (mm)	Section Width (mm)	Max. Load Capacity (kg)	Cold Inf. Pressure (kPa)	
26.5R25	E3/L3	**	50	193B	22.00/3.0	37	1750	675	11500	525	
			10	202A2					15000	500	
21.00R35	E3	**	50	201B	15.00/3.0	44	2005	570	14500	700	


WB02

Size	TRA Code	Load Symbol	Max. Speed (km/h)	Load Index	Standard Rim	Tread Depth (mm)	Overall Diameter (mm)	Section Width (mm)	Max. Load Capacity (kg)	Cold Inf. Pressure (kPa)	
20.5R25	E3/L3	**	50	177B	17.00/2.0	28.5	1490	520	7300	525	
			10	186A2					9500	500	
23.5R25	E3/L3	**	50	185B	19.50/2.5	35.5	1615	595	9250	525	
			10	195A2					12150	500	


WB03

Size	TRA Code	Load Symbol	Max. Speed (km/h)	Load Index	Standard Rim	Tread Depth (mm)	Overall Diameter (mm)	Section Width (mm)	Max. Load Capacity (kg)	Cold Inf. Pressure (kPa)	
23.5R25	E3+/L3+	**	50	185B	19.50/2.5	44	1615	595	9250	525	
			10	195A2					12150	500	
29.5R25	E3+/L3+	**	50	200B	25.00/3.5	50	1920	750	14000	525	
			10	208A2					18000	500	

WB04

Size	TRA Code	Load Symbol	Max. Speed (km/h)	Load Index	Standard Rim	Tread Depth (mm)	Overall Diameter (mm)	Section Width (mm)	Max. Load Capacity (kg)	Cold Inf. Pressure (kPa)	
29.5R25	E4/L4	**	50	200B	25.00/3.5	59	1920	750	14000	525	
			10	208A2					18000	500	

WB05

Size	TRA Code	Load Symbol	Max. Speed (km/h)	Load Index	Standard Rim	Tread Depth (mm)	Overall Diameter (mm)	Section Width (mm)	Max. Load Capacity (kg)	Cold Inf. Pressure (kPa)	
23.5R25	L5	**	10	201A2	19.50/2.5	76	1675	595	14500	650	
26.5R25	L5	**	10	209A2	22.00/3.0	86	1800	675	18500	650	
29.5R25	L5	**	10	216A2	25.00/3.5	94	1920	750	22400	650	

